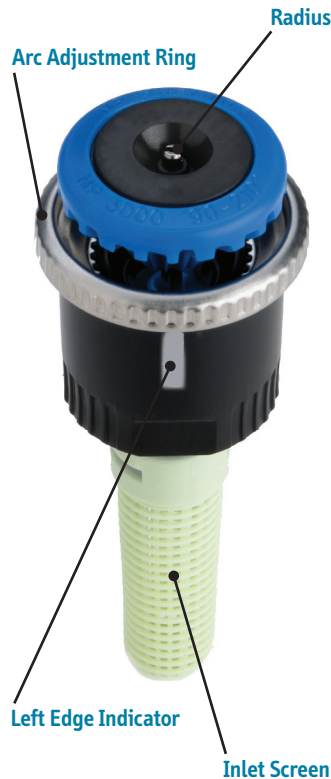




Easy radius adjustment.



Easy arc adjustment.



Radius Adjustment Screw

1. Arc Adjustment:

(Excludes 360 models)

- Install the MP Rotator with the **Left Edge Indicator** pointing to the left side of the desired watering direction.
- With the MP Rotator operating and in the pop-up position, rotate the **Arc Adjustment Ring**:
 - Clockwise to increase the arc
 - Counter-clockwise to decrease the arc

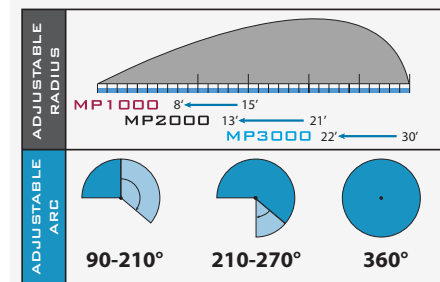
2. Radius Adjustment:

- Factory setting is for full radius. Radius can be reduced by 25%.
- With the MP Rotator tool or small, flat-bladed screwdriver, rotate the **Radius Adjustment Screw**:
 - Clockwise to decrease the arc
 - Counter-clockwise to increase the arc.

MP ROTATOR®

The Ideal 8-30' Solution

Maintain Matched Precipitation — Any Arc, Any Radius.
All MP Rotator® sprinklers can be combined on the same zone for greater design and installation flexibility.



Water Conservation

MP Rotators are more efficient than sprays because they apply water more slowly and evenly. In fact, you **use 30% less water** even though you run MP Rotators about twice as long as sprays. See below for comparison at 30 PSI with half-circle operation:

- 15H Spray Nozzle 1.85 gpm x 10 minute run time = 18.5 gallons
- MP2000 90-210° 0.63 gpm x 20 minute run time = 12.6 gallons

SAVINGS = 5.9 gallons or 31.9%

Lower System Cost

The good news about applying water more slowly and evenly is that MP Rotators lower your system costs. You can run more heads off your water meter and reduce the number of zones required. In many cases, you can use smaller pipe. See below for comparison at 30 PSI with half-circle operation

AWWA	Max. Safe Flow (GPM)	Loss (PSI)	Max. # 15H Sprays	Max. # MP2000s
5/8"	15	8.3	8	24
3/4"	22	7.9	12	35
1"	37	8.3	20	59

1940 Diamond Street, San Marcos, California 92078
www.HunterIndustries.com • www.MPRotator.com

Hunter®
The Irrigation Innovators



MP Rotator Performance Data

Arc	Pressure PSI	MP1000*					MP2000*					MP3000**							
		Color	Radius ft.	Flow GPM	Flow GPH	Precip in/hr	Color	Radius ft.	Flow GPM	Flow GPH	Precip in/hr	Color	Radius ft.	Flow GPM	Flow GPH	Precip in/hr			
90°	25	Maroon = 90° to 210°	-	-	-	-	Black = 90° to 210°	17'	0.31	18.6	0.41	0.48	Blue = 90° to 210°	25'	0.69	41.4	0.43	0.49	
	30		12'	0.16	9.6	0.43		0.50	18'	0.33	19.8	0.39		0.45	27'	0.74	44.4	0.39	0.45
	35		13'	0.18	10.8	0.40		0.46	19'	0.37	22.2	0.39		0.46	28'	0.80	48	0.39	0.45
	40		14'	0.19	11.4	0.39		0.45	20'	0.40	24	0.39		0.44	30'	0.86	51.6	0.37	0.43
	45		14'	0.20	12	0.39		0.45	21'	0.42	25.2	0.37		0.42	30'	0.91	54.6	0.39	0.45
	50		14'	0.21	12.6	0.38		0.43	21'	0.44	26.4	0.35		0.40	30'	0.96	57.6	0.41	0.47
55	15'	0.22	13.2	0.37	0.43	21'	0.47	28.2	0.37	0.43	30'	1.01	60.6	0.43	0.50				
180°	25	Maroon = 90° to 210°	-	-	-	-	Black = 90° to 210°	16'	0.58	34.8	0.44	0.50	Blue = 90° to 210°	25'	1.44	86.4	0.44	0.51	
	30		12'	0.32	19.2	0.43		0.50	17'	0.63	37.8	0.42		0.49	27'	1.58	94.8	0.42	0.48
	35		13'	0.35	21	0.40		0.46	18'	0.69	41.4	0.41		0.47	28'	1.70	102	0.42	0.48
	40		14'	0.37	22.2	0.39		0.45	19'	0.74	44.4	0.39		0.45	30'	1.82	109.2	0.39	0.45
	45		14'	0.40	24	0.39		0.45	20'	0.78	46.8	0.38		0.43	30'	1.93	115.8	0.41	0.48
	50		15'	0.41	24.6	0.38		0.43	21'	0.83	49.8	0.36		0.41	30'	2.04	122.4	0.44	0.50
55	15'	0.43	25.8	0.37	0.43	21'	0.85	51	0.37	0.43	30'	2.13	127.8	0.46	0.53				
210°	25	Olive = 360°	-	-	-	-	Green = 210° to 270°	16'	0.68	40.8	0.44	0.50	Yellow = 210° to 270°	25'	1.68	100.8	0.44	0.51	
	30		12'	0.37	22.2	0.43		0.50	17'	0.74	44.4	0.42		0.49	27'	1.84	110.4	0.42	0.48
	35		13'	0.41	24.6	0.40		0.46	18'	0.80	48	0.41		0.47	28'	1.99	119.4	0.42	0.48
	40		14'	0.43	25.8	0.39		0.45	19'	0.86	51.6	0.39		0.45	30'	2.12	127.2	0.39	0.45
	45		14'	0.46	27.6	0.39		0.45	20'	0.92	55.2	0.38		0.43	30'	2.25	135	0.41	0.48
	50		15'	0.48	28.8	0.38		0.43	21'	0.97	58.2	0.36		0.41	30'	2.37	142.2	0.43	0.50
55	15'	0.50	30	0.37	0.43	21'	1.01	60.6	0.37	0.43	30'	2.49	149.4	0.46	0.53				
270°	25	Olive = 360°	-	-	-	-	Green = 210° to 270°	16'	0.87	52.2	0.44	0.50	Yellow = 210° to 270°	25'	2.19	131.4	0.45	0.52	
	30		12'	0.41	24.6	0.40		0.46	17'	0.95	57	0.42		0.49	27'	2.37	142.2	0.42	0.48
	35		13'	0.45	27	0.39		0.45	18'	1.03	61.8	0.41		0.47	28'	2.55	153	0.42	0.48
	40		14'	0.47	28.2	0.38		0.44	19'	1.10	66	0.39		0.45	30'	2.73	163.8	0.39	0.45
	45		14'	0.48	28.8	0.38		0.43	20'	1.17	70.2	0.38		0.43	30'	2.89	173.4	0.41	0.48
	50		15'	0.50	30	0.37		0.43	21'	1.23	73.8	0.36		0.41	30'	3.06	183.6	0.44	0.50
55	15'	0.52	31.2	0.36	0.42	21'	1.30	78	0.37	0.43	30'	3.22	193.2	0.46	0.53				
360°	25	Olive = 360°	-	-	-	-	Red = 360°	16'	1.16	69.6	0.44	0.50	Gray = 360°	25'	2.88	172.8	0.44	0.51	
	30		12'	0.65	39	0.43		0.50	17'	1.27	76.2	0.42		0.49	27'	3.15	189	0.42	0.48
	35		13'	0.71	42.6	0.40		0.47	18'	1.37	82.2	0.41		0.47	28'	3.40	204	0.42	0.48
	40		14'	0.75	45	0.39		0.46	19'	1.47	88.2	0.39		0.45	30'	3.64	218.4	0.39	0.45
	45		14'	0.80	48	0.39		0.45	20'	1.56	93.6	0.38		0.43	30'	3.86	231.6	0.41	0.48
	50		15'	0.84	50.4	0.38		0.44	21'	1.64	98.4	0.36		0.41	30'	4.07	244.2	0.44	0.50
55	15'	0.87	52.2	0.37	0.43	21'	1.70	102	0.37	0.43	30'	4.27	256.2	0.46	0.53				

Radius measured on a 4" high riser. * To obtain full radius reduction for the MP1000 and MP2000, operate at a maximum of 30 PSI.

** When operating the MP3000 at full radius reduction maintain a minimum pressure of 40 PSI to ensure reliable operation.

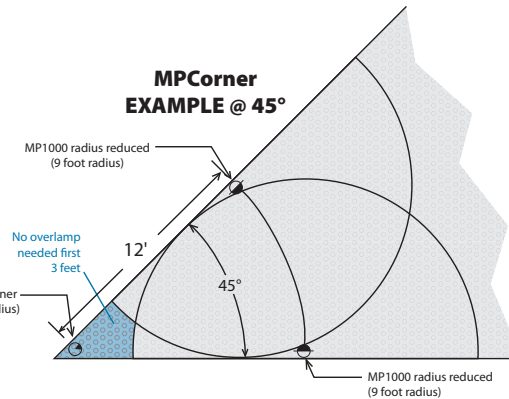


MP ROTATOR®

MP Rotator Performance Data

Arc	Pressure PSI	MPCorner		
		Color	Radius ft.	Flow GPM / Flow GPH
45°	25	Turquoise = 45° to 168°	-	-
	30		12'	0.17 / 10.2
	35		13'	0.18 / 10.8
	40		14'	0.19 / 11.4
	45		14'	0.21 / 12.6
	50		14'	0.22 / 13.2
55	15'	0.23 / 13.8		
90°	25	Turquoise = 45° to 168°	11'	0.31 / 18.6
	30		12'	0.34 / 20.4
	35		13'	0.36 / 21.6
	40		14'	0.39 / 23.4
	45		14'	0.41 / 24.6
	50		15'	0.43 / 25.8
55	15'	0.46 / 27.6		
105°	25	Turquoise = 45° to 168°	11'	0.36 / 21.6
	30		12'	0.39 / 23.4
	35		13'	0.42 / 25.2
	40		14'	0.45 / 27
	45		14'	0.48 / 28.8
	50		15'	0.51 / 30.6
55	15'	0.53 / 31.8		

Hunter
The Irrigation Innovators



MP Rotator Performance Data

Nozzle Model	Pressure PSI	Color	MPLCS515 MPRCS515 MPSS530		
			Width x Length	Flow GPM	Flow GPH
MP Left Strip	30	Ivory	4' x 14'	0.19	11.4
	35		5' x 15'	0.21	12.6
	40		5' x 15'	0.22	13.2
	45		5' x 15'	0.23	13.8
	50		6' x 16'	0.25	15
55	6' x 16'	0.26	15.6		
MP Right Strip	30	Copper	4' x 14'	0.19	11.4
	35		5' x 15'	0.21	12.6
	40		5' x 15'	0.22	13.2
	45		5' x 15'	0.23	13.8
	50		6' x 16'	0.25	15
55	6' x 16'	0.26	15.6		
MP Side Strip	30	Brown	4' x 28'	0.38	22.8
	35		5' x 30'	0.41	24.6
	40		5' x 30'	0.44	26.4
	45		5' x 30'	0.47	28.2
	50		6' x 32'	0.49	29.4
55	6' x 32'	0.51	30.6		